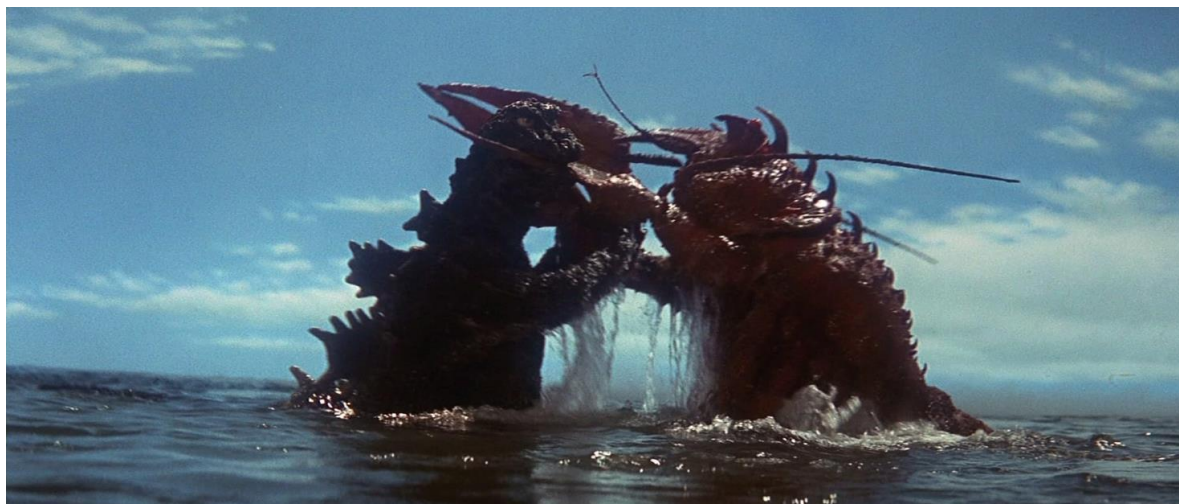


For immediate release: Tue 26 August

barbican

All Kaiju Attack: Earth SOS!

Sat 20 Sep – Wed 10 Dec 2025



Ebirah, Horror of the Deep, Japan 1966, Dir Jun Fukuda

Barbican Cinema is pleased to present All Kaiju Attack: Earth SOS, a season of Japanese monster movies which explores how kaiju carnage connects to humanity's relationship with the natural world.

Screening from September to December, through a selection of films across four decades, the season delves into the environmental themes of this underappreciated genre, which pays tribute to nature's power and considers the balance needed between human progress and environmental preservation. The films will all be introduced by kaiju film historians and Japanese art experts, including **Yuriko Hamaguchi**, **Toshiko Kurata** and **Steven Sloss**.

From the very first Godzilla film in 1954, Japanese monster movies have engaged with environmental themes in different and complex ways. Behind the thrilling, fantastic scenes of monster battles lies an intelligent critique of humanity's meddling with nature and the terrifying consequences that can result.

The season kicks off in September with **Godzilla vs Biollante** (Japan 1989), in which a genetic experiment spirals out of control as a mutant plant threatens mankind and emerges as a mighty foe for Godzilla. This follows with the cult favourite **Godzilla vs Megalon** (Japan 1973), in which nuclear testing unleashes mayhem on the undersea kingdom of Seatopia, with Godzilla once again flexing his eco-saviour muscles.

October includes two screenings – one as part of **Family Film Week** – of **Son of Godzilla** (Japan 1967), where man's interference with the environment leads to disaster, as scientists seeking to control the weather unleash a dangerous horde of giant insects. Despite a lighter tone than earlier Japanese creature features, *Son of Godzilla* shows the dangers of upsetting the natural order.

The programme continues in November with **Ebirah, Horror of the Deep** (Japan 1966), one of the most fun Godzilla movies in which **Godzilla** and **Mothra** put their differences aside to battle a terrifying giant crustacean. With three kaiju embodying nature as a powerful and untameable force, this film deftly explores themes of man's connection with the world, and the fights between **Ebirah** and **Godzilla** are among the franchise's most memorable.

The season concludes in December with **Gamera the Brave** (Japan 2006), a family-friendly reboot in which the gigantic **Gamera** is reincarnated through a baby turtle that grows up into a giant beast to slay a man-eating entity that's threatening Tokyo. This engrossing film introduced a new generation to the series, and this is a rare chance for UK audiences to see it on the big screen.

Alex Davidson, Barbican Cinema Curator, says:

*"After all of last year's Godzilla screenings sold out, as part of our first All Kaiju Attack! programme, I'm so excited we'll be showing another selection of top-notch kaiju films, some of which have never shown on the big screen in London before. **All Kaiju! Attack: Earth SOS!** shows that, behind all the monster mayhem lie serious messages about humankind's meddling with the natural world."*

Screenings

Godzilla vs Biollante + introduction by kaiju expert Steven Sloss (12A*)

Japan 1989, Dir Kazuki Ōmori, 104min

Sat 20 Sep, 6pm

Cinema 1

Godzilla vs Biollante is a high point for the Godzilla film series, with a fantastical vision of a kaiju antagonist engineered from the cells of a rose, the dead daughter of a scientist and Godzilla's own DNA. Continuing the upsurge in quality heralded by **The Return of Godzilla** (1984), the final Godzilla film of the 1980s boasts great special effects and some of the best suitmation and miniatures in the series.

The movie explores bioethics with sensitivity through all the chaos, as human hubris and genetic engineering unleash untold havoc. Biollante is a magnificent, unnerving creation, unlike anything else the franchise had seen, and the human dimension adds a welcome nuance amid the carnage. This is kaiju mayhem at its most poetic and imaginative.

Godzilla vs Megalon + introduction by kaiju expert Steven Sloss (12A*)

Japan 1973, Dir Jun Fukuda, 81min

Sun 21 Sep, 2pm

Cinema 1

Nuclear testing provokes Seatopia, an underground civilisation, into fighting back against humankind with two horrifying kaiju – insectoid megabeast Megalon and chickenlike cyborg Gigan. Godzilla is the world's only hope, although a robot with a secret power may also offer salvation.

There is a lot of fun to be had in this joyful kaiju rumble film, which introduced many young audiences to Godzilla in the west. With themes of nature striking back against humanity's destructive impulses and Godzilla once again flexing his eco-saviour muscles, it culminates in an epic monster battle that has to be seen to be believed.

Family Film Week screening: *Son of Godzilla* + intro (PG)

Japan 1967, Dir Jun Fukuda, 85min

Sat 25 Oct, 1pm

Cinema 3

Once again, humanity's meddling with nature leads to disaster, as scientists seeking to control the weather unleash a dangerous horde of giant insects. *Son of Godzilla* introduces a number of new kaiju to the franchise: mutated mantis creatures (Kamacuras), a predatory monster spider (Humonga) and, less horrifyingly, Minilla, Godzilla's child.

Despite a lighter tone than earlier Japanese creature features, *Son of Godzilla* shows the dangers of upsetting the natural balance. The touching scenes of Godzilla teaching his son how to breathe fire are countered by the permanent threat of the savage monsters. The dash of humour in the film struck a lighter tone for the later films in the Godzilla franchise.

***Son of Godzilla* + introduction by Toshiko Kurata (PG)**

Japan 1967, Dir Jun Fukuda, 85min

Sat 25 Oct, 4.15pm

Cinema 3

Once again, humanity's meddling with nature leads to disaster, as scientists seeking to control the weather unleash a dangerous horde of giant insects. *Son of Godzilla* introduces a number of new kaiju to the franchise: mutated mantis creatures (Kamacuras), a predatory monster spider (Humonga) and, less horrifyingly, Minilla, Godzilla's child.

Despite a lighter tone than earlier Japanese creature features, *Son of Godzilla* shows the dangers of upsetting the natural balance. The touching scenes of Godzilla teaching his son how to breathe fire are countered by the permanent threat of the savage monsters. The dash of humour in the film struck a lighter tone for the later films in the Godzilla franchise.

***Ebirah, Horror of the Deep* + introduction by curator Alex Davidson (PG)**

Japan 1966, Dir Jun Fukuda, 87min

Tue 18 Nov, 6.30pm

Cinema 1

In one of the liveliest and most fun Godzilla movies, the king of kaiju battles Ebirah, a terrifying mega-crustacean that kills everything it encounters. Meanwhile, a group of shipwreck survivors encounter a menacing terrorist group called the Red Bamboo, intent on manufacturing nuclear weapons and enslaving the islanders.

With three kaiju embodying nature as a powerful, untameable force and a climactic battle with the future of the ecosystem at stake, *Ebirah, Horror of the Deep* subtly explores themes of man's connection with nature. The fights between Ebirah and Godzilla are among the franchise's most memorable – all this, and a delightful cameo from Mothra, too.

***Gamera the Brave* + introduction by Yuriko Hamaguchi (PG)**

Japan 2006, Dir Ryuta Tasaki, 96min

Wed 10 Dec, 6.20pm

Cinema 1

Years after Gamera sacrificed himself for humanity, the benevolent kaiju lives again through a newly hatched turtle. As an adult, his calling as earth's protector manifests once more as a new, aggressive kaiju, Zedus, begins a destructive rampage.

Gamera the Brave introduced the franchise to a new generation, following the acclaimed Heisei Trilogy. Emphasising respect for the natural world and subtly bringing in environmental themes, it's an engrossing and often delightful addition to the series. To date, it remains the last Gamera film. This is a very rare chance to see it on the big screen.

ENDS

Notes to Editors

For further information contact: Ian Cuthbert, Communications Manager, Cinema
ian.cuthbert@barbican.org.uk
020 3834 1121

Andrea Laing, Communications Assistant: Theatre & Dance, Cinema and Creative Collaboration
andrea.laing@barbican.org.uk

Box office: www.barbican.org.uk

Standard: £13

Members: £10.40

Concessions: £11

Young Barbican: £6

There is £1.50 booking fee for purchases made online / # Certificate to be confirmed

Barbican press room

All Barbican Centre press releases, news announcements and the Communications team's contact details are listed on our website at www.barbican.org.uk/our-story/press-room

About the Barbican

The Barbican is a catalyst for creativity, sparking possibilities for artists, audiences, and communities. We showcase the most exciting art from around the world, pushing traditional artistic boundaries to entertain and inspire millions of people, create connections, provoke debate, and reflect the world we live in.

We are an international arts and events centre rooted firmly in our own neighbourhood, collaborating with local communities and putting the City of London on the map as a destination for everybody. Central to our purpose is supporting emerging talent and shaping opportunities that will accelerate the next generation of creatives.

As a not-for-profit, we rely on the generosity of individuals and organisations, including our principal funder the City of London Corporation. Every ticket purchased, donation made, and pound earned supports our arts and learning programme and enables the widest possible range of people to experience the joy of the arts.

Opened in 1982, the Barbican is a unique and audacious building, recognised globally as an architectural icon. As well as our theatres, galleries, concert halls and cinemas, we have a large conservatory with over 1,500 species of plants and trees, a library, conference facilities, public and community spaces, restaurants, bars, and a picturesque lakeside oasis.

We're proud to be the home of the [London Symphony Orchestra](#), our Resident Orchestra, and a London base for the [Royal Shakespeare Company](#). We regularly co-commission, produce and showcase the work of our Artistic Associates the [Academy of Ancient Music](#), [BBC Symphony Orchestra](#), [Boy Blue](#), [Darbar Arts](#), [Cultural and Heritage Trust](#), and [Serious](#), who produce the [EFG London Jazz Festival](#), alongside other associates and partners including [Doc'n Roll Film Festival](#), [London Palestine Film Festival](#), and [Trafalgar Theatre Productions](#).

For more information, visit our [website](#) or connect with us on [Instagram](#) | [Facebook](#) | [YouTube](#) [Spotify](#) | [LinkedIn](#)

About Barbican Cinema

We connect audiences with a curated programme of international cinema; from celebrated filmmakers to ground-breaking and under-heard voices from past and present.

Our programmes are presented in Cinemas 1 in the main centre and Cinemas 2&3 on Beech Street.

Our programme ranges from thematic seasons that respond to today's world, to new releases, ScreenTalks, cross-artform collaborations, family events, access screenings and event cinema that presents the performing arts on screen.

We showcase the work of emerging filmmakers, as well as less familiar work of exceptional filmmakers from the UK and around the world. We champion the work of Barbican Young Programmers and give stage to emerging musicians in our ongoing film & live music series which includes our flagship collaboration with the Guildhall School of Music & Drama.

As part of a cross-arts centre, our cinemas are a cultural space for people to share the viewing experience. We strive to be inclusive in everything we do; providing platforms for the widest possible range of filmmakers and ensuring we are an open, welcoming and accessible venue for all our audiences.

