

Perfect Show for Rachel - Visual Story

The Pit - Barbican Centre, 2024



Contents	Page Number
Getting to The Pit Theatre	3
Your Journey	4
Relaxed Performance	8
The Set	10
The Tech Desk	11
Explanation of the show	12
BSL - British Sign Language	12
Explanation of tech	12
Cast & Creatives	14
Costume	18

Getting to The Pit Theatre

Address: Silk Street, Barbican, London, EC2Y 8DS

Please use this address when planning your journey.



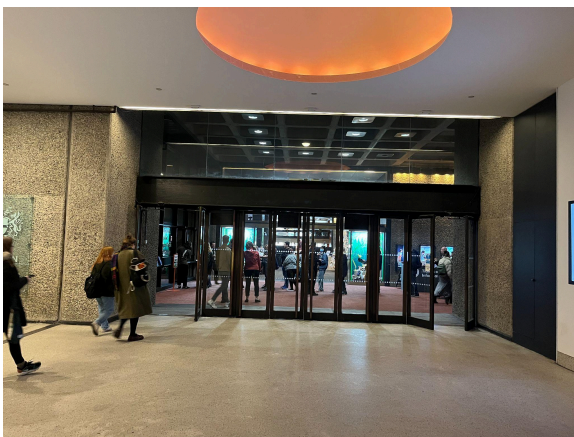
This is a picture of the Barbican Centre, showing the **Main Entrance**. This is located on **Silk Street**.

Your Journey



When you walk through the **Main Entrance**, there will be trained staff there to help you.

To get to **The Pit**, walk down past the displays on the left. The floor is slightly sloped.



At the bottom of the sloped floors, **go through the glass on the left** which take you onto Level G. Level G is for 'ground'.



The picture on the left is of the area called **The Bridge**. It has a red carpet.

This area can be quite busy and there may be lots of other people around.

You will need to **walk across The Bridge to get to the lifts on the other side**.



The Bridge has a **round opening halfway along** to let in light from above.

You can look through this hole down onto the level below.



Walk past the round opening and ahead will be glass doors. **The lift is on the right.**

Only the lifts on the right will take you to -2, which is where The Pit is.



These are the two lifts that take you to **Level -2**, where The Pit is located.

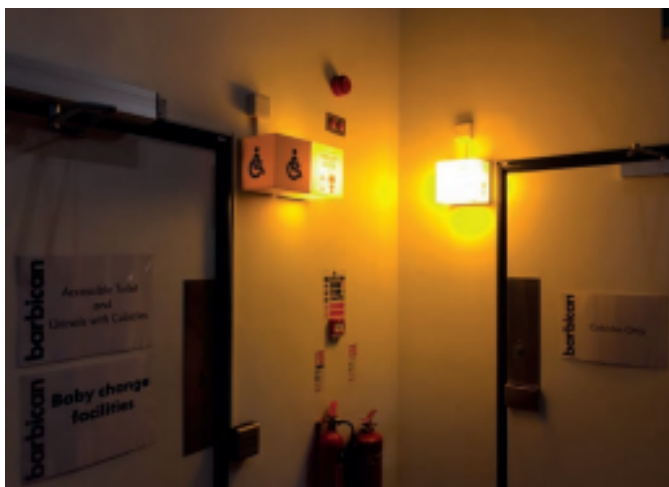


These are the buttons you need to press in order to call the lift. **You will be going down to Level -2.**



When you reach Level -2, this is what the **reception area** of The Pit will look like.

Trained staff will be there to help you.

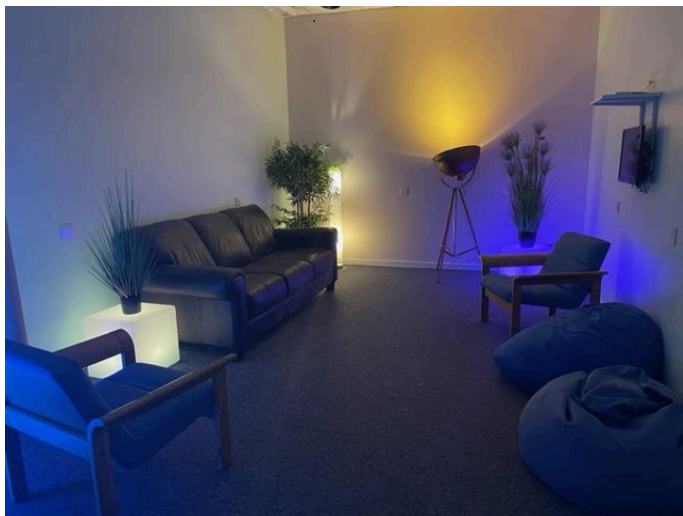


On this level is an **accessible toilet and gender neutral toilets.**



There is also a **Sensory Room**.

You can go at any time before, during or after the show for a break away from the performance.



There are beanbags, chairs and a sofa. Feel free to **use the space in a way that works for you.**

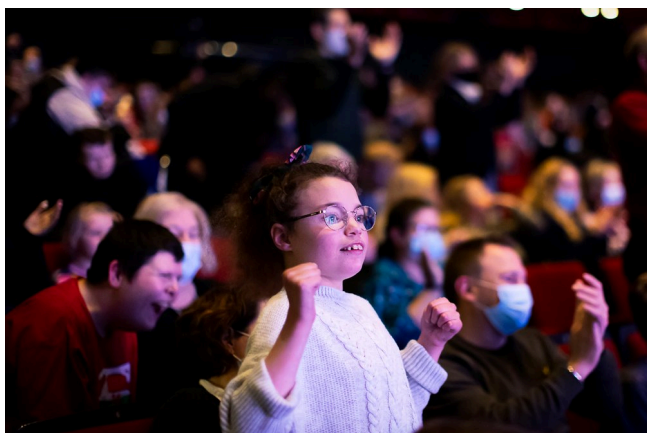
You have the option of overhead lighting or dimmed lighting.



This is what the theatre looks like. **There is no allocated seating, so feel free to sit wherever you like.**

All shows are relaxed performances, please feel free to move in whatever way feels most comfortable to you.

Relaxed Performance

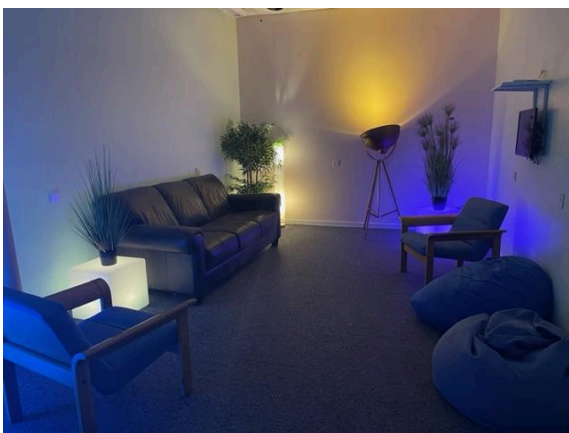


All performances of *Perfect Show for Rachel* are **Relaxed Performances as standard**, meaning the usual rules of being in a theatre audience are relaxed, and you are warmly invited to respond to the show however is natural for you.

There will be **low level lighting** throughout the performance to ensure your safety if you need to move about.



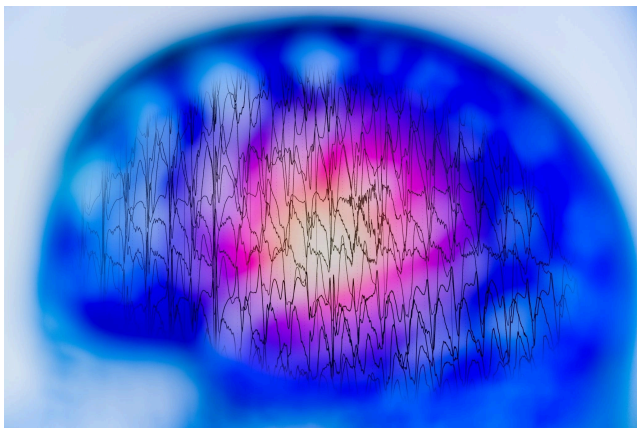
Auditorium doors will be kept open to assist you with entering and exiting the theatre during the performance.



A quiet chill out space (The Sensory Room) is provided with comfortable seating.



Ear defenders are available if you need them.



There **won't be strobe lighting or any sudden loud noises** in the show.

There will still be sound and lighting effects (sometimes with **some flashing**) in the show according to Rachel's creative vision.

The cast and creative team warmly welcome you to move around or make noise however you may need to.

The Set

This is what the set will look like in the theatre. **It has been designed to look like a living room, because that is where Rachel likes to relax and have fun!** There are tall walls painted in pastel colours, and two raised levels either side of the room, with stairs at the front. There is a door and windows at the back of the set.



On the raised level on the left is the music corner where you will see Josh playing the piano and Nick playing the drums.

In the middle, our company of performers will act, sing and dance according to Rachel's instructions.

On the raised level on the right is an armchair and lamp.

On the floor and to the right will be Rachel and the tech desk.



Stella, the designer of Perfect Show For Rachel, designed and painted the set. **Stella looked at some of Rachel's artwork and copied it on to the set** so that Rachel can see her own artwork within the set! Here is a photo of one of Stella's recreations of **Rachel's drawings** on the set. 'Rachel's drawing' is written next to it so that the audience know it is Rachel's design.

The Tech Desk

The picture below is of Rachel's tech desk. This is how she directs the show. Each button has a photo on it that matches a scene that Rachel likes. **It is up to Rachel which button she presses and when.**



Explanation of the show

Rachel will be sitting behind her tech desk. **This is a desk with 50 different buttons on it.** Rachel can press any button she wants. There are **photos on the buttons that match different scenes in the show.**



For example, if Rachel wants everyone to sing her Happy Birthday, she will press the button with a birthday cake on it.

When Rachel presses one of the buttons, a scene will start.

The **lights will change** and the **actors will move** to get into position.

Sometimes when she presses a button, **music** will start to play.

Depending on which button Rachel presses, the actors might sing, dance, play fight, play a game, run around, or have a chat with Rachel.

BSL - British Sign Language



All performances include **creative captioning**, **live captioning** and **integrated BSL**, meaning it will be accessible for deaf and Hard of Hearing audiences.

Explanation of tech

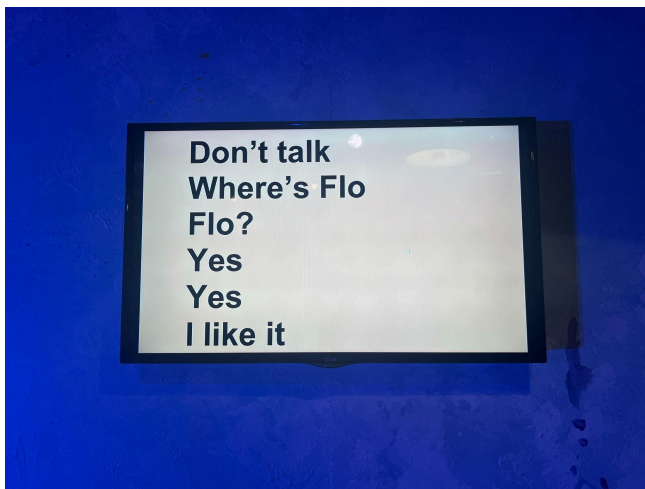
Captions



Captions are projected onto the set.

The name of the button scene that Rachel has pressed gets projected, and then the scripts the actors are saying or lyrics they are singing.

Rachel's Captions



Our director Rachel does not like microphones! To make sure that our audience can hear her input we have a **live scribe captioning every word that she says**. Her words appear on a TV screen in the set.




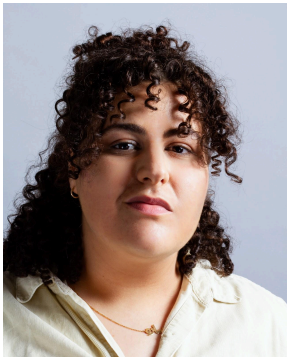

Video Projection



Videos are projected onto the set in some of the scenes. This may include pictures of Rachel and her friends or family, or special moments of Rachel's life, filmed by Rachel's family.

Cast and Creatives

			
Rachel O'Mahony <i>(Director)</i>	Flo O'Mahony	Fleur Rooth	Wendy O'Mahony
			
Lee Simpson	Josh Goodman	Stephen Collins	Nick Gilbert

			
Becky Barry	Folarin Akinmade	Gabriel Akamo	Sara Dawood
			
Austin Yang <i>(Live Scribe)</i>			

Costume



This is a **photo of the cast (with some of the team, who you won't see on stage)** in their costumes.

The costumes are 90s / Punk themed. Lots of people are wearing bright coloured tops or jackets with darker trousers.

Rachel is wearing a red denim jacket with sequin patches on it shaped like hearts. On the back is written 'director'.

We all hope you enjoy the show!

If you have any queries about access, please email hannah@wearezooco.co.uk