

barbican

Barbican Theatre Visual Journey



As You Like It

Royal Shakespeare Company

Chilled Performance

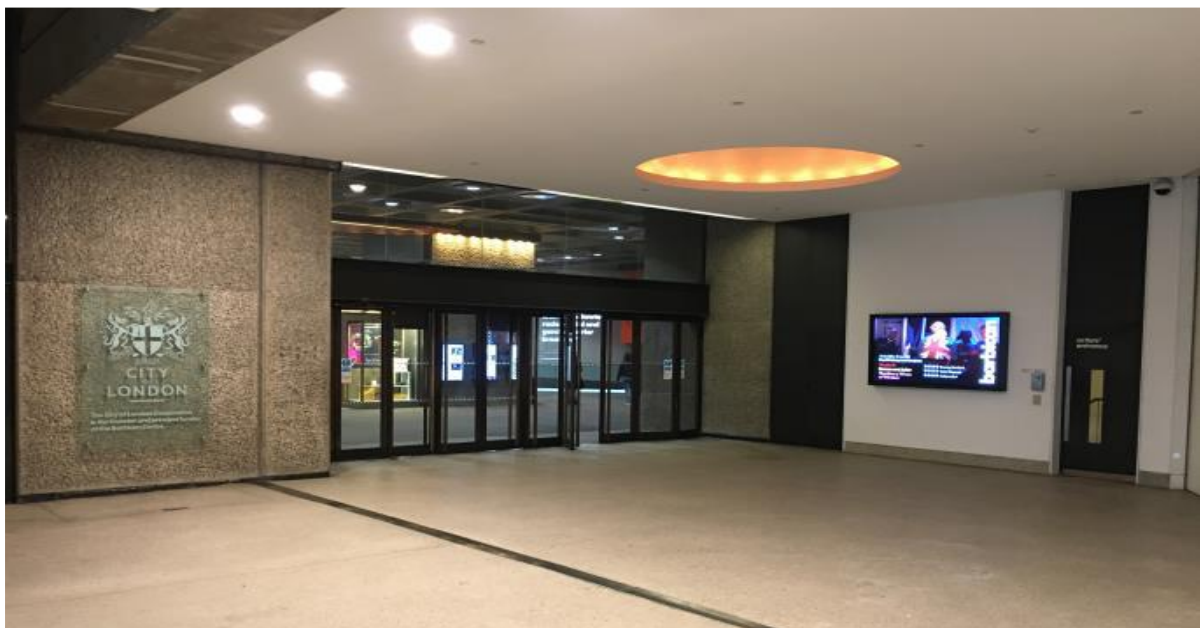
5 December 2019, 1.15pm

This visual story is designed for visitors attending the Chilled Performance of As You Like It. It contains information and images to help prepare you for your visit.

The play is being performed in the Theatre within the Barbican Centre. Below is a picture of the Barbican Centre showing the main entrance which is located on Silk Street.



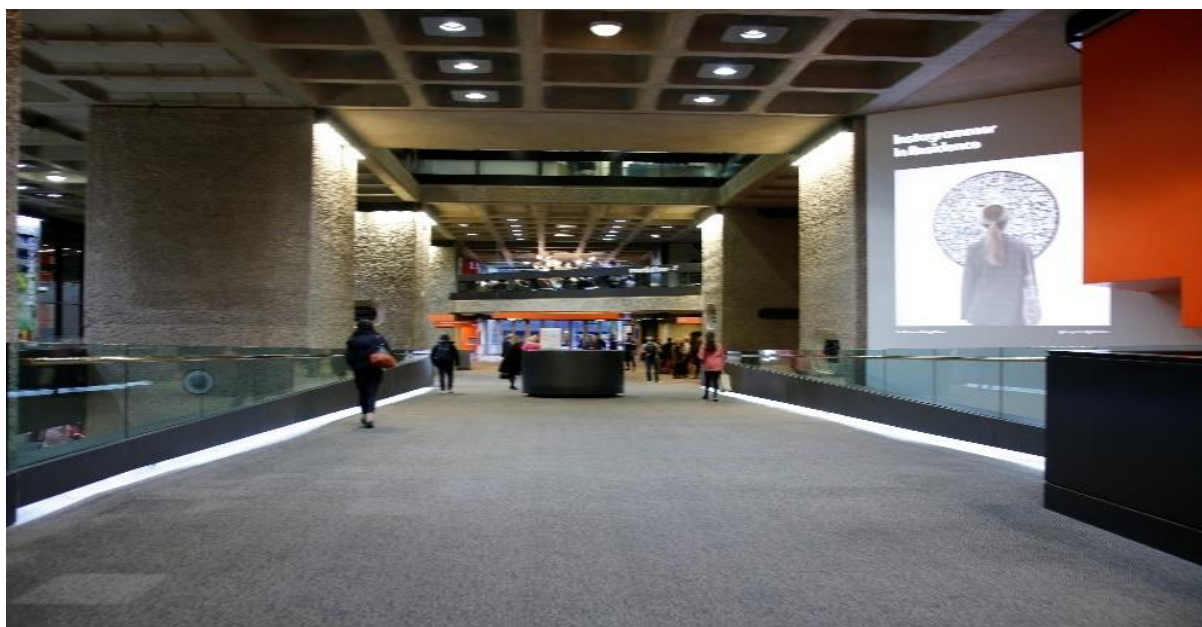
When you enter the Centre follow the concrete walkway and go through the glass doors. These glass doors will take you onto the Ground Floor of the centre. Below is a picture of the doors to the Ground Floor. This area can get quite busy so there may be a lot of people around and it could be noisy.



Once you come through the glass doors you will find the Barbican Shop in front of you. The shop stocks a wide range of exclusive gifts, books and souvenirs should you wish to visit.



To access the theatre and collect tickets, follow the walkway round keeping the shop on your left-hand side. Note that the Ground Floor can be quite busy so there may be a lot of people around. At the end of the walkway you can either take the stairs to your left or the lifts in front of you.

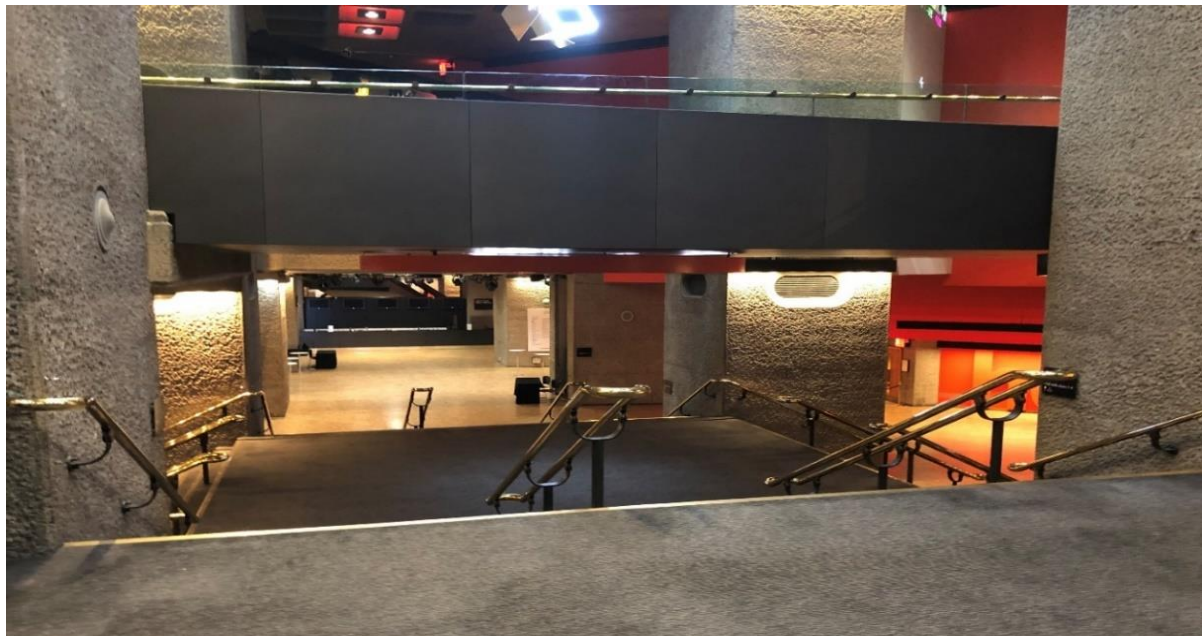


Stairs Route

Take these stairs which will be on your left and follow them down.



The first set of stairs in the above picture will connect to the below stairwell. The lower level of the shop will be on your right and the box office straight ahead.



Lifts Route

There are lifts on the Ground Floor (the floor where you entered the centre) which will take you to the various theatre levels



For box office, ticket collection, stalls seating, cloakroom, toilets and refreshments, take the lift to Level – 1. Once you arrive at Level – 1, proceed out of the lift, go through the glass doors and cross the road. This route will look like this.



Box Office & Ticket Collection

If you already have your tickets, there will be signage and staff around the Barbican Centre who can direct you to your seating level.

The box office will open 90 minutes before the performance begins. The box office desks and ticket collection on Level – 1 will look like the below. The area can get very busy and noisy.



How long is the play?

The play is shown in two halves with a 20 minute break in the middle.

The first half is 1 hour 15 minutes and the second half is about 1 hour 18 minutes long

Ushers

Ushers are people who check your tickets for the theatre. If you need help or have a question you can ask them. Ushers will be wearing a black and white Barbican uniform and lanyard.

Auditorium

This is the auditorium where the play is performed. The audience (that's you) sit down to watch the play. It will be full of people and quite noisy. Below is a picture of the auditorium.



Below is a picture of the stage where the actors perform the play.



Chillout Area

Here is a picture of the entrance to the chillout area. If you want to have a break during the play you can go to the chillout area which will be in the Latecomers lounge on Circle Left of the theatre. You can ask an usher to show you where this is at any point.



Here is a picture of the inside of the chillout area.



What is the play about?

A short description of the play: the play starts in the court of Duke Frederick. To become duke he had to overthrow Duke Senior, and has banished him to the forest.

Duke Frederick has set up a wrestling match and Orlando decides to enter. His older brother Oliver hates him and supports the wrestler who he fights against, but Orlando wins! Rosalind, Duke Senior's daughter, is still at court and sees Orlando win. She falls in love with him and talks to her best friend Celia about it.

After the fight, Duke Frederick gets angry when he finds out who Orlando's father was before he died and banishes Orlando. He then goes to see Celia, who is his daughter, and Rosalind and announces that Rosalind will also have to leave. The two friends hatch a plan to run away together in disguise, Celia as a poor woman called Aliena and Rosalind as a boy called Ganymede. They run away and take Touchstone, the court fool, with them.

When they get to the forest, Celia, Touchstone and Rosalind meet an old man called Corin who lives there. He shows them a good place to live and introduces them to the young shepherds Silvia and Phoebe. Silvia loves Phoebe, but as soon as Phoebe sees Rosalind in disguise as Ganymede she falls in love with Ganymede instead. They also find badly written poems pinned to the trees in the forest, all created by Orlando, and eventually Orlando meets Rosalind. He sees her dressed as Ganymede and thinks she is a boy so he tells her about his love for Rosalind and that he had written all the poems about her. She agrees to help him win Rosalind's love and they agree to meet every day.

Orlando and Rosalind carry on meeting every day and they become very close, even though Orlando has no idea who she really is. Orlando then finds his brother Oliver in the forest, being attacked, and saves him. The brothers become friends and Oliver falls in love with Aliena, who is Celia in disguise. Touchstone has found a young woman called Audrey to spend time with, and Rosalind gets frustrated watching all these people in love when she can't be with Orlando. She is also frustrated with Phoebe, who won't leave her alone, and so she decides to tell everyone she is not really Ganymede but Rosalind. She gathers everyone together and reveals who she and Celia really are, in front of her exiled father Duke Senior and the goddess Hymen. Once everything is revealed, Rosalind and Orlando are married, Celia and Oliver are married, Touchstone and Audrey are married, and Silvia finally gets to marry Phoebe as well.

The characters in the play

Below are pictures of all the different actors and the names of the characters they play. Some actors play one part in the 'Court' and a different part in the 'Forest of Arden'. You can tell that they are a different character because they will be dressed in a different costume (a costume is the name for the clothes actors wear onstage).



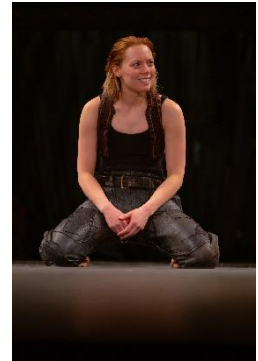
Duke Frederick



Duke Senior



Jaques



Rosalind disguised as
Ganymede



Celia



Orlando



Oliver



Touchstone



Corin



Silvia



Phoebe



Audrey



HYMEN
Behind Rosalind

Spoiler Alert

The notes that follow this page are provided for those who would benefit from being prepared for some of the more dramatic or scary elements of the performance

What else might you need to know?

- During the performance some characters will come in through the audience, and they can move quickly or run.
- There will be music during the show. This is live so it may be loud at some points. You can see the musicians in the balconies above the stage. Some of the actors on stage also sing during the performance.
- Orlando and Oliver are brothers but they don't like each other at all at the start of the play and they fight and strangle each other. Don't worry, this is not real and the actors practise this a lot.
- Some things get thrown into the audience at different points in the play, including a piece of pancake, glitter and flowers. This will only affect people in the front rows.
- The play starts in the Court of Duke Frederick, and when the setting changes into the forest you will hear a loud creaking noise and the lights will get darker. The noise gets louder and crashes at the end. It only happens for a short time.
- Before the interval break Duke Senior makes all the lights come on so you can see everyone and you can make a friend if you want to.
- Characters may talk to people in the audience but you do not have to say anything. At one point Corin jumps into the audience and will sit down.
- During the interval break, the character of Orlando moves around the theatre and hands out post-it notes he has written on. If you are given one Rosalind may come and collect it from you in the second half of the play.
- Celia will ask someone to wear a coat made of post-it notes and come up on stage at some point. You can say no if you don't want to do this.
- Touchstone and Rosalind will come out into the audience and crouch down in the front row. You do not need to do anything, they are just hiding.
- The blood we use on stage is pretend. It is fake but it is made to look very real. In the world of the play Jacques has come across an injured deer. She decides to help the injured deer and try to save its life. By trying to help the deer Jacques gets her hands covered in blood.
- There is a large puppet that comes on stage. This is the character of Hymen, who is a god. The puppet is very large and is controlled by lots of actors who you will see holding parts of the puppet on stage.

This is a picture of the Court.



Here is a picture of the Forest.



This is a picture of Hymen, the god who marries everyone at the end of the play.



A message from us

Thank you for visiting the Royal Shakespeare Company's production of *As You Like It* at the Barbican Theatre. We hope you enjoy this Chilled Performance.