

Pre-installation press image form

*Lee Krasner: Living Colour*

Barbican Art Gallery, London, UK

30 May – 1 September 2019

Media View: Wednesday 29 May 2019, 10am – 1pm

#LeeKrasner @barbicancentre

Please contact the press office for high res copies – details below

Exhibition trailer available [HERE](#)



**1. Lee Krasner**

*Self-Portrait*, c. 1928

The Jewish Museum, New York.

© The Pollock-Krasner Foundation.

Courtesy the Jewish Museum, New York.



**2. Lee Krasner**

*Untitled*, 1946

Collection of Bobbi and Walter Zifkin.

© The Pollock-Krasner Foundation.

Photograph by Jonathan Urban.



**3. Lee Krasner**

*Abstract No. 2*, 1947

IVAM Centre, Spain.

© The Pollock-Krasner Foundation.

Courtesy IVAM.



**4. Lee Krasner**

*Mosaic Table*, 1947

Private Collection.

© The Pollock-Krasner Foundation.

Courtesy Michael Rosenfeld Gallery LLC, New York.



**5. Lee Krasner**  
*Blue Level*, 1955  
Private Collection.  
© The Pollock-Krasner Foundation.  
Photograph by Diego Flores.



**6. Lee Krasner**  
*Bald Eagle*, 1955  
Collection of Audrey Irmas, Los Angeles.  
© The Pollock-Krasner Foundation.  
Photograph by Jonathan Urban.



**7. Lee Krasner**  
*Desert Moon*, 1955  
Los Angeles County Museum of Art.  
© The Pollock-Krasner Foundation.  
© 2018. Digital Image Museum Associates/  
LACMA/Art Resource NY/ Scala, Florence.

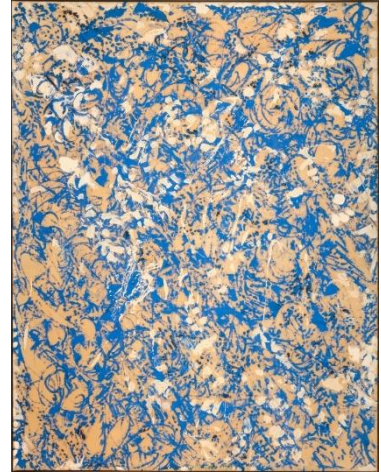


**8. Lee Krasner**  
*Prophecy*, 1956  
Private Collection.  
© The Pollock-Krasner Foundation.  
Courtesy Kasmin Gallery, New York.  
Photograph by Christopher Stach





**9. Lee Krasner**  
*Polar Stampede*, 1960  
The Doris and Donald Fisher Collection at the San Francisco Museum of Modern Art.  
© The Pollock-Krasner Foundation.  
Courtesy Kasmin Gallery, New York.



**10. Lee Krasner**  
*Through Blue*, 1963  
Private Collection, New York City.  
© The Pollock-Krasner Foundation.  
Photograph by Christopher Stach.



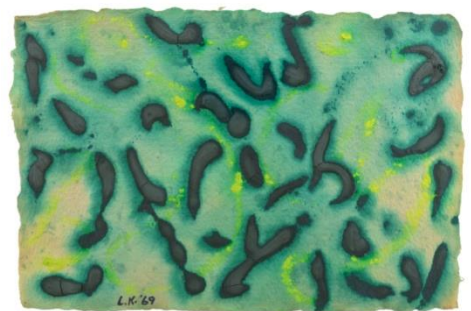
**11. Lee Krasner**  
*Another Storm*, 1963  
Private Collection.  
© The Pollock-Krasner Foundation.  
Courtesy Kasmin Gallery, New York.



**12. Lee Krasner**  
*Icarus*, 1964  
Thomson Family Collection, New York.  
© The Pollock-Krasner Foundation.  
Courtesy Kasmin Gallery, New York.  
Photograph by Diego Flores.



**13. Lee Krasner**  
*Siren*, 1966  
Hirshhorn Museum and Sculpture Garden,  
Smithsonian Institution, Washington D.C.  
© The Pollock-Krasner Foundation.  
Photograph by Cathy Carver, Hirshhorn Museum and  
Sculpture Garden.



**14. Lee Krasner**  
*Untitled*, 1969  
The Pollock-Krasner Foundation, New York City.  
© The Pollock-Krasner Foundation.  
Courtesy Kasmin Gallery, New York.



15. Lee Krasner  
*Palingenesis*, 1971  
Collection Pollock-Krasner Foundation.  
© The Pollock-Krasner Foundation.  
Courtesy Kasmin Gallery, New York.



16. Lee Krasner  
*Imperative*, 1976  
National Gallery of Art, Washington D.C.  
© The Pollock-Krasner Foundation.  
Courtesy National Gallery of Art, Washington D.C.



17. Lee Krasner c.1938  
Photographer unknown.



18. Lee Krasner at the WPA Pier, New York City,  
where she was working on a WPA commission, c.  
1940.  
Photograph by Fred Prater. Lee Krasner Papers,  
c.1905-1984. Archives of American Art, Smithsonian  
Institution.



19. Lee Krasner in her studio in the barn, Springs,  
1962  
Photograph by Hans Namuth. Lee Krasner Papers,  
Archives of American Art, Smithsonian Institution,  
Washington, D.C. © 1991 Hans Namuth Estate,  
Courtesy Center for Creative Photography



20. Photograph by Irving Penn  
Lee Krasner, Springs, NY, 1972  
© The Irving Penn Foundation

**IMPORTANT CREDIT AND PICTURE INFORMATION**

These images may only be used for publicity purposes in connection with *Lee Krasner: Living Colour*, Barbican Art Gallery, 30 May – 1 September 2019. The images may NOT be cropped, bled off the page, overprinted with text, or altered in any way and may not be passed to any third parties without further permission. All caption information, as given beneath each image, MUST appear whenever an image is reproduced.

If you have any queries please contact either:

**Ann Berni, Senior Communications Manager**

+44 (0) 207 382 7169 [ann.berni@barbican.org.uk](mailto:ann.berni@barbican.org.uk)

**Lily Booth, Communications Officer**

+44 (0) 207 382 6162, [lily.Booth@barbican.org.uk](mailto:lily.Booth@barbican.org.uk)

**Bréifne Ó Conbhúí, Communications Assistant**

+44 (0) 207 382 7254

[breifne.oconbhui@barbican.org.uk](mailto:breifne.oconbhui@barbican.org.uk)

**Jemima Yong, Communications Assistant** +44 207 638

4141 ext 8280, [Jemima.yong@barbican.org.uk](mailto:Jemima.yong@barbican.org.uk)

**AFTER USING AN IMAGE/S FOR PUBLICATION**

Please email a link or PDF of your article to us

Or send a copy to:

Media Relations - Visual Arts

Barbican Centre

Silk Street, London, EC2Y 8DS

Thank you for your help with maintaining our records, we look forward to hearing from you [www.barbican.org.uk](http://www.barbican.org.uk)

**Barbican Newsroom**

All Barbican Centre press releases, news announcements and the Media Relations team's contact details are listed on our website at [www.barbican.org.uk/news](http://www.barbican.org.uk/news)