

Barbican Shop announces *Modern Couples: Art, Intimacy and the Avant-garde* retail collection including Eileen Gray, Alvar Aalto, and exclusive Wolf & Moon designs

shop.barbican.org.uk

Barbican Shop announces a collection of designs created and inspired by some of the leading names in the new Barbican exhibition *Modern Couples: Art, Intimacy and the Avant-garde*. Including iconic furniture and homeware pieces by Eileen Gray and Alvar Aalto as displayed in the exhibition, as well as an exclusive new jewellery range inspired by Aino and Alvar Aalto that has been created for the Barbican by Wolf & Moon, the collection offers the opportunity to own some of the most celebrated product designs from the last 100 years.



Modern Couples: Art, Intimacy and the Avant-garde (Barbican Art Gallery, 10 October 2018 – 27 January 2019) showcases the creative output of over 40 artist couples active in the first half of the 20th century. Drawing on loans from private and public collections worldwide, this major interdisciplinary show features the work of painters, sculptors, photographers, architects, designers, writers, musicians and performers, shown alongside personal photographs, love letters, gifts and rare archival material. Among the highlights are legendary duos such as: **Aino Aalto and Alvar Aalto**; **Eileen Gray and Jean Badovici**; **Jean Arp and Sophie Taeuber-Arp**; **Camille Claudel and Auguste Rodin**; **Barbara Hepworth and Ben Nicholson**; **Frida Kahlo and Diego Rivera**; **Dora Maar and Pablo Picasso**; **Lee Miller and Man Ray**; **Virginia Woolf and Vita Sackville-West**.

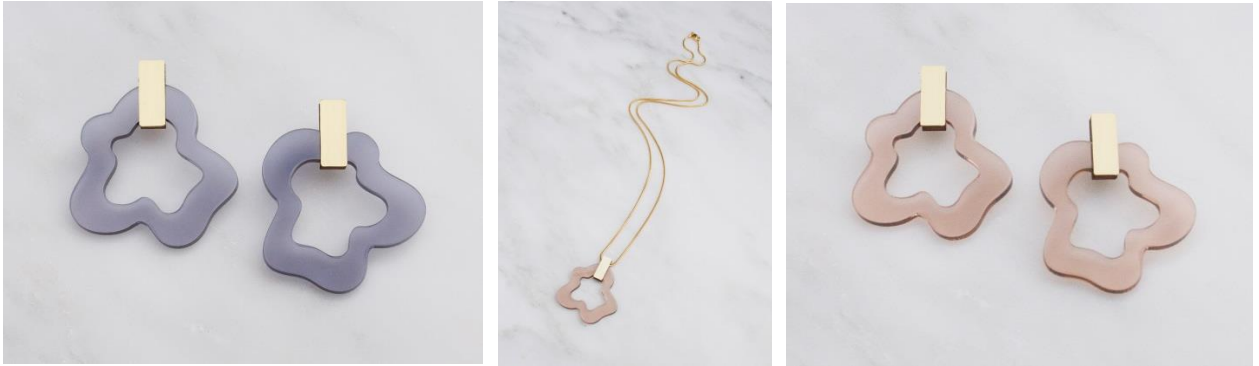
The retail collection is available through the Barbican Shop instore and online: shop.barbican.org.uk

EXCLUSIVE: WOLF & MOON JEWELLERY

The exclusive new range of jewellery by Wolf & Moon for the Barbican is inspired by the work of Aino and Alvar Aalto, referencing the shape and materials made famous in their iconic designs as featured in the *Modern Couples* exhibition. Wolf & Moon is a handcrafted jewellery label by British designer Hannah Davis. Noted for their graphic and modern statement pieces that can be worn everyday, all of their jewellery is handmade in their London studio by a small team of passionate makers.



Aino Earrings (available in frosted brown or mint) - £30.00
Aino Necklace (available in frosted brown or mint) - £28.00



Alvar Earrings (available in grey blue or clear brown) - £40.00
Alvar Necklace (available in grey blue or clear brown) - £32.00

ALVAR AALTO COLLECTION FROM IITTALA

Founded as a glassworks in 1881, Iittala is a Finnish design brand that in 1936 collaborated with Alvar Aalto to produce a now iconic range of glass vases, as displayed in the *Modern Couples* exhibition. Inspired by water waves ('aalto' in Finnish), the vases won first prize in the 1936 Karhula-Iittala Glass Design Competition, and are today considered a symbol of Finnish design and one of the most famous glass objects in the world.

Each and every vase in the Alvar Aalto Collection continues to be mouth blown at the Iittala factory in Finland and comes in a wide range of colours and sizes. Also available are tumblers designed by Aino Aalto in 1932, based on the circles that form when a stone is thrown into the water, and bowls created by Pentagon Design inspired by the original Aalto vases and tumblers.



Aalto vase - 160mm (available in desert, dark grey or clear glass) - £131.00
Aalto vase - 251mm (available in moss green or clear glass) - £131.00
Aalto vase - 255mm (available in dark grey) - £131.00



Aino Aalto low tumbler set of 2 (available in grey or clear glass) - £14.00
Aino Aalto tall tumbler set of 2 (available in grey or clear glass) - £18.00
Aalto bowl - 358mm (available in rose gold) - £99.00
Aalto bowl - 195mm (available in clear glass) - £83.00

Also available:

Aino Aalto bowl - £11.00
Aalto bowl - 358mm (available in plywood) - £59.00
Aalto vase - 95mm (available in desert glass) - £58.00

EILEEN GRAY FURNITURE BY ARAM DESIGNS

A pioneer of the modern movement in architecture, some of Eileen Gray's most famous furniture pieces (as displayed in the *Modern Couples* exhibition) will be available through the Barbican Shop. Her interior design schemes maintain a simple, stylish elegance to this day, and the pieces have been manufactured and made available to the Barbican through Aram Designs (who hold the worldwide licence for Eileen Gray designs).



E1027 adjustable side table in black tubular steel with clear glass top (1926-29)

51d x 54-90h cm

Price £580

Interested in multi-functional furniture, Eileen Gray designed an adjustable side table for Villa E1027, her summer house in *Maison en Bord de Mer* at Roquebrune-Cap-Martin, France. Gray built the house for herself and for her collaborator and lover, Jean Badovici and furnished it with many of her own designs. The coded name is made up of E for Eileen, 10 for Jean (J is the 10th letter of the alphabet), 2 for B(adovici) and 7 for G(ray).

Adjustable to different heights, the table was designed so that her sister could eat breakfast in bed without leaving crumbs on the sheets. The matt black lacquer clearly emphasises the linear form of the table – a version she considered especially elegant.



Round occasional table in chromed tubular steel and black high gloss lacquered wood

40w x 36d x 56h cm

Price £871

The Latin for furniture, 'res mobiles', is based on the word mobile. Eileen Gray took this very literally. She loved light, functional furniture that could be moved around without a problem. Like the E1027 adjustable table, it is constructed so the base can slide under a bedside or armchair, putting breakfast or bedtime reading within comfortable reach.



Blue Marine rug in hand knotted wool (1926-29)

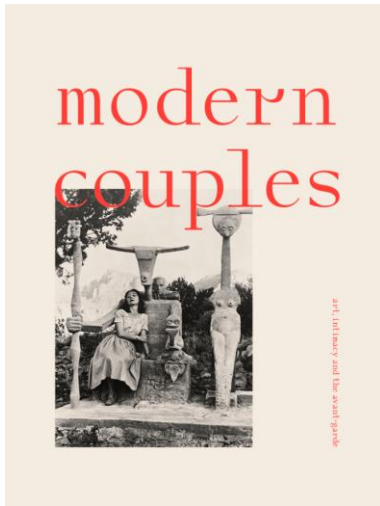
215 x 110 cm

£1748

The Blue Marine rug was also designed by Eileen Gray for Villa E1027. It was part of a series of rugs produced by the designer for various interior projects in the 1920s and 1930s. It is made of pure new wool and coloured with natural vegetable dye, hand-woven to a density of 80 knots per square inch.

EXHIBITION CATALOGUE

The exhibition is accompanied by a catalogue published by Prestel and features beautifully reproduced works by all the artists in the exhibition. Edited by Jane Alison (Head of Visual Arts at the Barbican) and Coralie Malissard (Assistant Curator at the Barbican), it includes contributions from over 40 international writers.



352 pages with 300 images., Hardcover.
ISBN: 978-3-7913-5841-3
£40

ENDS

Notes to Editors

Press Information

For further information, images or to arrange interviews, please contact:
John Kelly, Communications Assistant / john.kelly@barbican.org.uk / 0207 382 2389

Gallery Shop

Barbican Art Gallery, Level 3, Barbican Centre
Opening hours: Sat to Wed: 10am – 6pm, Thu to Fri: 10am – 9pm
Prices are correct at time of going to press
0207 638 7995
shop@barbican.org.uk
shop.barbican.org.uk

Barbican Shop

Level G & M, Barbican Centre
Opening hours: Mon to Sat: 10am – 9pm, Sun: 12noon – 8pm
Prices are correct at time of going to press
0207 638 8274
shop@barbican.org.uk
shop.barbican.org.uk

Exhibition

Modern Couples: Art, Intimacy and the Avant-Garde is at Barbican Art Gallery from 10 October 2018 to 27 January 2019. The exhibition is organised by **Centre Pompidou-Metz** in collaboration with Barbican Centre, London. It is curated by **Emma Lavigne**, Director Centre Pompidou-Metz; **Jane Alison**, Head of Visual Arts, Barbican; **Coralie Malissard**, Assistant Curator, Barbican; **Elia Biezunski**, Associate Curator, Centre Pompidou-Metz; and **Cloé Pitiot**, Design Curator, Musée des Arts Decoratifs, Paris. The exhibition at Barbican Art Gallery is designed by **Casper Mueller Kneer Architects** with graphic design by **APFEL (A Practise for Everyday Life)**. The exhibition is supported by Lead Sponsor Bupa Global and tp bennett. With additional support from the Office for Cultural and Scientific Affairs of the Embassy of Spain in London.

10 October 2018 – 27 January 2019
Media View, Tuesday 9 October, 10am – 2pm

Opening Hours

Saturday to Wednesday, 10am – 6pm; Thursday & Friday, 10am – 9pm

Bank Holiday Mondays: 12noon – 6pm, Bank Holiday Fridays: 12noon – 9pm

Exhibition closed 24 –26 December 2018; New Year's Day opening 1 January 2019: 12noon – 6pm

Public Information

Barbican Art Gallery and Gallery Shop, Barbican Centre, Silk Street, EC2Y 8DS, London

0845 120 7550

www.barbican.org.uk/moderncouples

Follow updates on the exhibition via Facebook, Twitter and Instagram.

#ModernCouples and @barbicancentre.

Events

A rich programme of talks and events accompanies the exhibition. Check the website for full listings:

www.barbican.org.uk/moderncouples

Full press pack available online from the Barbican Newsroom:

Links to all documents can be found in the 'Downloads' box on the top right-hand side of the page from

www.barbican.org.uk/moderncouplesnews

About the Barbican

A world-class arts and learning organisation, the [Barbican](#) pushes the boundaries of all major art forms including dance, film, music, theatre and visual arts. Its creative learning programme further underpins everything it does. Over 1.1 million people attend events annually, hundreds of artists and performers are featured, and more than 300 [staff](#) work onsite. The architecturally renowned centre opened in 1982 and comprises the Barbican Hall, the Barbican Theatre, The Pit, Cinemas 1, 2 and 3, Barbican Art Gallery, a second gallery the Curve, foyers and public spaces, a library, Lakeside Terrace, [a glasshouse conservatory](#), conference facilities and three restaurants. The City of London Corporation is the founder and principal funder of the Barbican Centre.

The Barbican is home to Resident Orchestra, [London Symphony Orchestra](#); Associate Orchestra, [BBC Symphony Orchestra](#); Associate Ensembles the [Academy of Ancient Music](#) and [Britten Sinfonia](#), Associate Producer [Serious](#), and Artistic Partner [Create](#). Our Artistic Associates include [Boy Blue](#), [Cheek by Jowl](#), Deborah Warner, [Drum Works](#) and [Michael Clark Company](#). The [Los Angeles Philharmonic](#) are the Barbican's International Orchestral Partner, the [Australian Chamber Orchestra](#) are International Associate Ensemble at Milton Court and [Jazz at Lincoln Center Orchestra](#) are International Associate Ensemble.

Find us on [Facebook](#) | [Twitter](#) | [Instagram](#) | [YouTube](#) | [Spotify](#)

The Art of Change

The Art of Change season explores how the arts respond to, reflect and potentially effect change in the social and political landscape. The season sees the Barbican present bold artistic responses to vital global issues including feminism, climate change and human rights, while providing a platform for voices currently underrepresented in the arts. The season includes world-class music, theatre, dance, film, visual arts and learning and runs throughout 2018.

barbican.org.uk/whats-on/series/the-art-of-change.