

## Garden Room Level 3

Barbican Centre  
Silk Street  
London EC2Y 8DS  
Tel +44 (0) 7382 7043  
business.events@barbican.org.uk  
www.barbican.org.uk

### Capacities

standing reception 300  
standing buffet 250  
seated buffet 180  
banquet 220  
theatre style 150

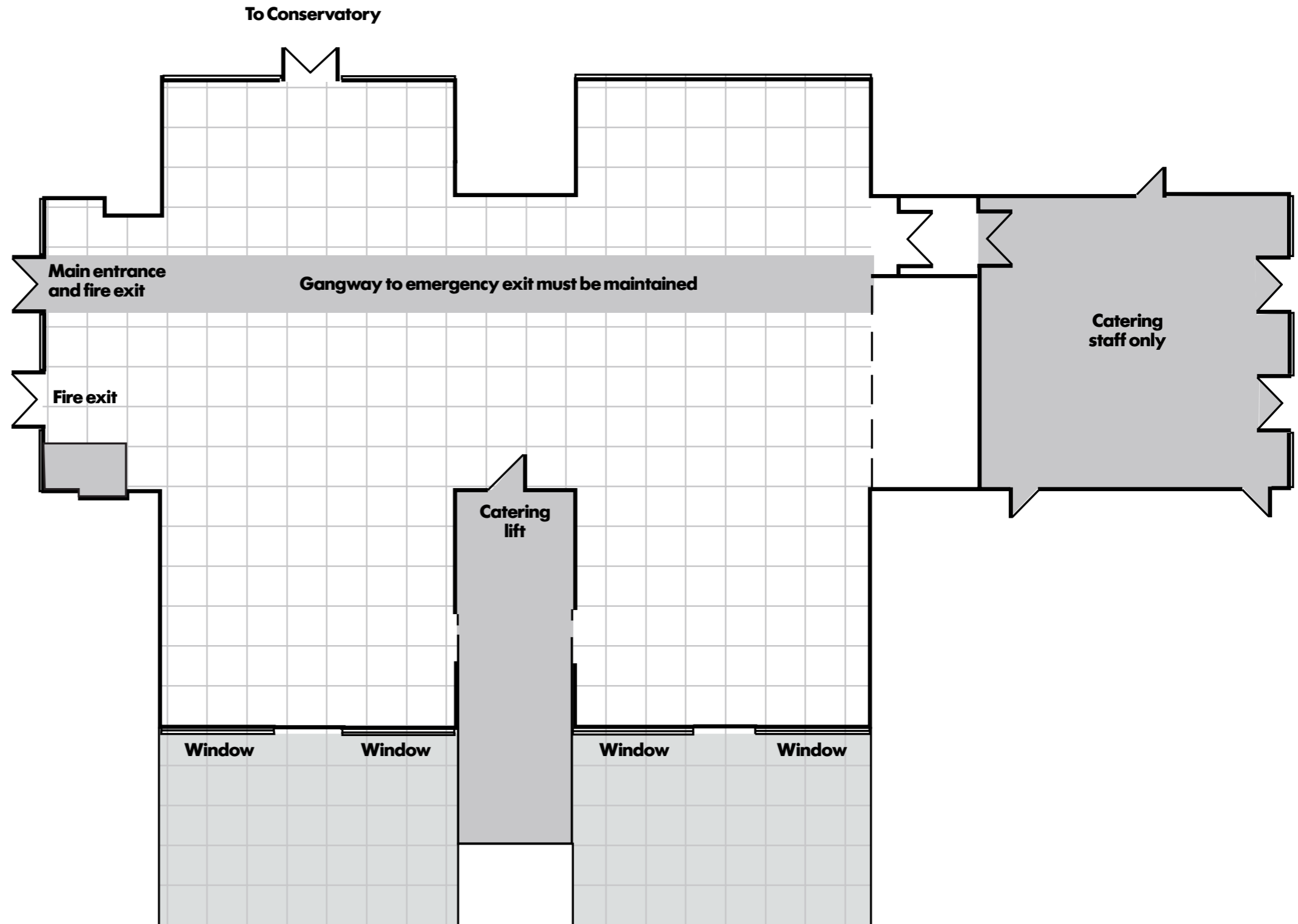
### Dimensions

available floor area 316m<sup>2</sup> (3,401 sq.ft)  
width 16.6m (54'6")  
length 24m (78'9")  
max height 3m (9'10")  
min height 2.5m (8'4")

### Facilities

- free delegate wi-fi
- natural daylight, black out blinds
- LED colour changing ceiling panels
- suitable for music up to 95dB (by arrangement)
- comfort cooling
- goods lift access (8am–8pm)
- accessible via passenger lifts and stairs
- staffed cloakroom
- standard 13amp power (other power to quote)

Plan to be used as guide only.  
Each grid square represents  
1m<sup>2</sup> approx.



View of the Lakeside Terrace